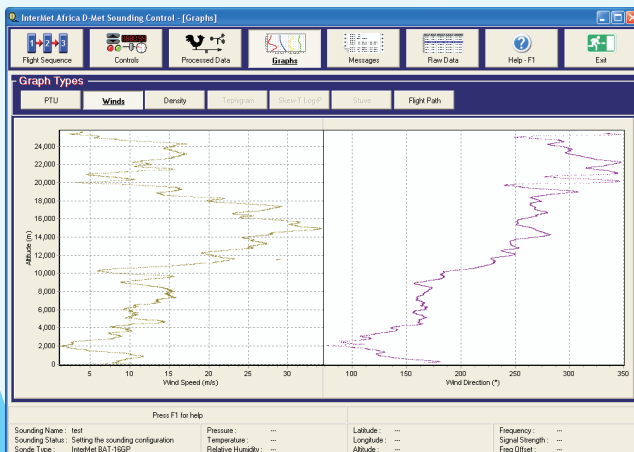


D-Met Upper Air Sounding Software



General Features

- Minimal system training
- Simple flow of operation
- Minimal PC training required
- Expansion / upgrade capabilities
- Highly configurable
- Real-time data processing
- Per-second data
- Built-in Tests



Reports/Messages

- TEMP, PILOT, CLIMAT TEMP, BUFR Messages
- Significant and Standard levels Messages
- Time and altitude intervals
- Each type is fully configurable
- Available from launch
- Display, save, print, distribute, e-mail

Graphs

- Pressure, Temperature, Humidity, Dewpoint vs altitude
- Wind speed and direction vs altitude
- Density vs altitude
- Balloon path
- Configurable scales and colours
- Available from launch
- Display, save, print, distribute, e-mail

HEIGHT (m)	TIME (hh:mm)	PRESS (hPa)	TEMP (°C)	HUMID (%)	WDIR (deg)	WSPD (m/s)
0	0	0.0	0.0	0	0	0.0
500	09:08	950.7	17.3	54	139	9.5
1000	163.1	902.5	14.5	56	124	10.2
1500	241.6	854.4	14.1	40	113	4.6
2000	333.8	803.4	10.3	46	107	11.7
2500	433.5	756.5	8.0	17	110	4.0
3000	491.2	710.9	5.0	4	113	9.0
3500	569.1	669.2	3.0	6	140	9.2
4000	644.1	629.0	-0.9	9	140	7.0
4500	737.5	590.0	-2.6	5	140	13.0
5000	841.4	553.9	-6.7	8	168	9.6
5500	942.7	518.0	-10.7	6	157	10.5
6000	1040.5	485.4	-14.3	3	197	9.2
6500	1136.5	454.0	-18.1	3	165	10.9
7000	1239.2	423.5	-21.9	2	160	10.5
7500	1339.2	397.6	-25.9	3	165	15.1
8000	1473.7	370.9	-30.0	3	170	15.4
8500	1596.3	345.2	-34.0	4	167	13.2
9000	1690.9	321.1	-38.7	4	166	9.1
9500	1789.3	299.2	-42.6	4	184	14.9
10000	1866.0	277.4	-46.5	4	185	15.4
10500	1967.7	258.0	-50.6	5	212	9.3
11000	2073.1	236.0	-54.4	5	229	10.1

Utilities

- Data management and distribution
- Calculations
- Calendars and sun/moon information
- Access control
- Met Day
- Help and manuals accessible from software
- Archiving